

TCP/IP TelNet AS/400 (TN5250E), Telnet S/390 (TN3270E) Emulation Software for Windows 2000/2003 Terminal Servers



Developed by PRAIM, **Net-2000** is a solution for users that need to connect to IBM AS/400 or S/390 Systems using the TCP/IP communication protocol.

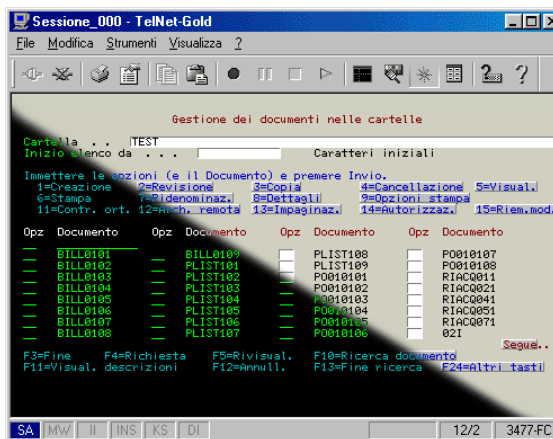
The main engine of Net-2000 is the emulation program "TelNet-Gold" that provides the 5250 /3270 connection to Host system. This emulator was designed entirely by PRAIM, the result of years of experience and a knowledge of IBM users. Besides a complete list of available Video emulations, "TelNet-Gold" offers "real" IBM 3812 printer emulation with advanced functionality demanding users require.

Specific functions like "**Hex Pass-Through**", Euro symbol, and "**Host Transform**", to name a few, are standard functions integrated into "TelNet-Gold". Also included is the "Auto Sign-On feature with crypted password ,which provides better security for the Host system connection, without installing expensive data security **SSL** (Secure Socket Layer) software options.

The TelNet session configuration is made easier by the TelNet Gold Wizard, a utility program designed to guide the user through the configuration phase. The management and editing of all emulation parameters is fast and intuitive thanks to the " Administrator" program.

The Advanced **View** function is a new feature which modernizes the look and feel of the 5250 display screen.

It is possible to choose between two different visualization modes; standard mode (classic "green on black" color layout) and advanced mode (graphic visualization), as shown in the figure on the right.



Terminal Server Version

Derived from the single workstation version,, the Terminal Server Version can be installed centrally and used from client devices in multi user mode.

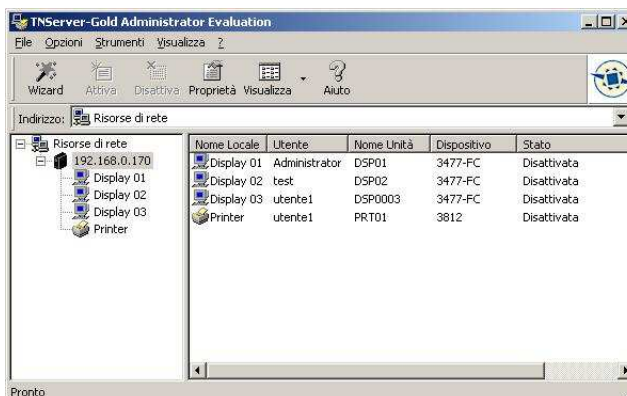
It is fully integrated with the Microsoft Active Directory tool for access to the user database.

Domain User Enumeration

In this mode, the session administration tool allows the enumeration of all domain users and manages the distribution of specific configurations.

A specific configuration for every user

Emulation sessions are assigned from the administrator and can be displayed as menu items or desktop icons.



Main Characteristics

- 32-bit 5250 / 3270 Emulation Program, installable on Windows 2000, 2003 Terminal servers
- Supports the TN5250e / TN3270e Video and Printer protocols to connect to IBM AS/400 and S/390 systems
- Supports up to 10 different Hosts.
- Terminal (Workstation ID) ID identification support).

Video Session Characteristics

- Supported Video Emulation: 5251, 5291, 3196, 3180-2, 3477-FG, 3477-FC, 3278-x
- "Enhanced Display Auto-Signon and Password Encryption" support for connection to AS/400 System data security
- Supports 14 different keyboard language models
- 122 keys Praim Terminal keyboard support
- Euro symbol support.
- Ruler Support (reference row)
- Includes "Hotspot", "Macros" and "num keyboard" functions.
- Includes key and video attribute editing functions.
- Cursor shape and fonts can be modified.
- Includes enhanced "cut and paste" as well as "Record/Playback" functions.

Printer Session Characteristics

- Supported Printer Emulations: 3812, 3287
- Handles the continuous feed, drawer, envelope, manual feed, duplex, automatic programmable orientation, and automatic reduction function (C.O.R.)
- Handles CPI, LPI control and "override" functions and LQ and NLQ quality settings
- Supports 2 different print modes:
 - Graphic Mode (GDI Windows).
 - Text Mode with Pass-Through-Driver.
 In Text Mode it is possible to select the printer driver form a pre-configured list., user customization of the drivers is supported.
- Supports Hex-Pass-Through (HPT) functionality; it is possible to customize the Escape sequence starting and closing characters. Euro symbol support.

PC side minimal requirements

- Operating System: Windows 2000, Windows 2003 with Terminal Services
- RAM Memory: 5MB per user
Hard Disk space: 10MB
- TCP/IP network connection

Description	Code	
TCP/IP Terminal Server Software Emulator License XX users in pack of 10	70AC200XX	PRAIM S.R.L. Via Zambra, 4 38100 Trento -Italy Tel: 0461 420517 Web: www.praim.it e-mail: info@praim.it 