

PSF/400 is a required Operating System (OS) option when printing to IPDS Printers over an IP connection. When an IPDS Twinax Printer is connected by using a Twinax-Over-IP Controller it appears as an Ethernet/IPDS printer to the Power9, Power8, Power7, and any iSeries AS/400. Because of this, **PSF/400 IS REQUIRED** when there is a need to print an IPDS Graphics such as barcodes, IPDS Overlays, fancy fonts, etc. Please see below for more information on this.

The various Twinax-Over-IP Controllers are listed below:

I-O Corporation Twinax Controller Models	BOSaNOVA eTwinax Twinax Controller Models
5794ip Xip	eTwinax 4600 Series - All Models
LAN-RPC Xip+	eTwinStar 4800 Series - All Models
LAN-RPC+ Xip+D	eTwinPrint 4691
	(The specific model number is not listed on the unit. All above models have one of the two part numbers listed on bottom of the unit - BX6058 or BX60581)

When a Twinax IPDS Printer is **directly connected** to the Internal Twinax Workstation Controller of an iSeries AS/400, or connected to a Twinax Remote Controller (IBM 5394/5494 or compatibles) **PSF/400 IS NOT required.**

The Device Description for a Twinax IPDS Printer is "*IPDS".

You may have an IPDS Printer that is **NOT generating any graphical output** as listed above, you **WILL NOT NEED PSF/400 when moving certain printer models to an IP environment.**

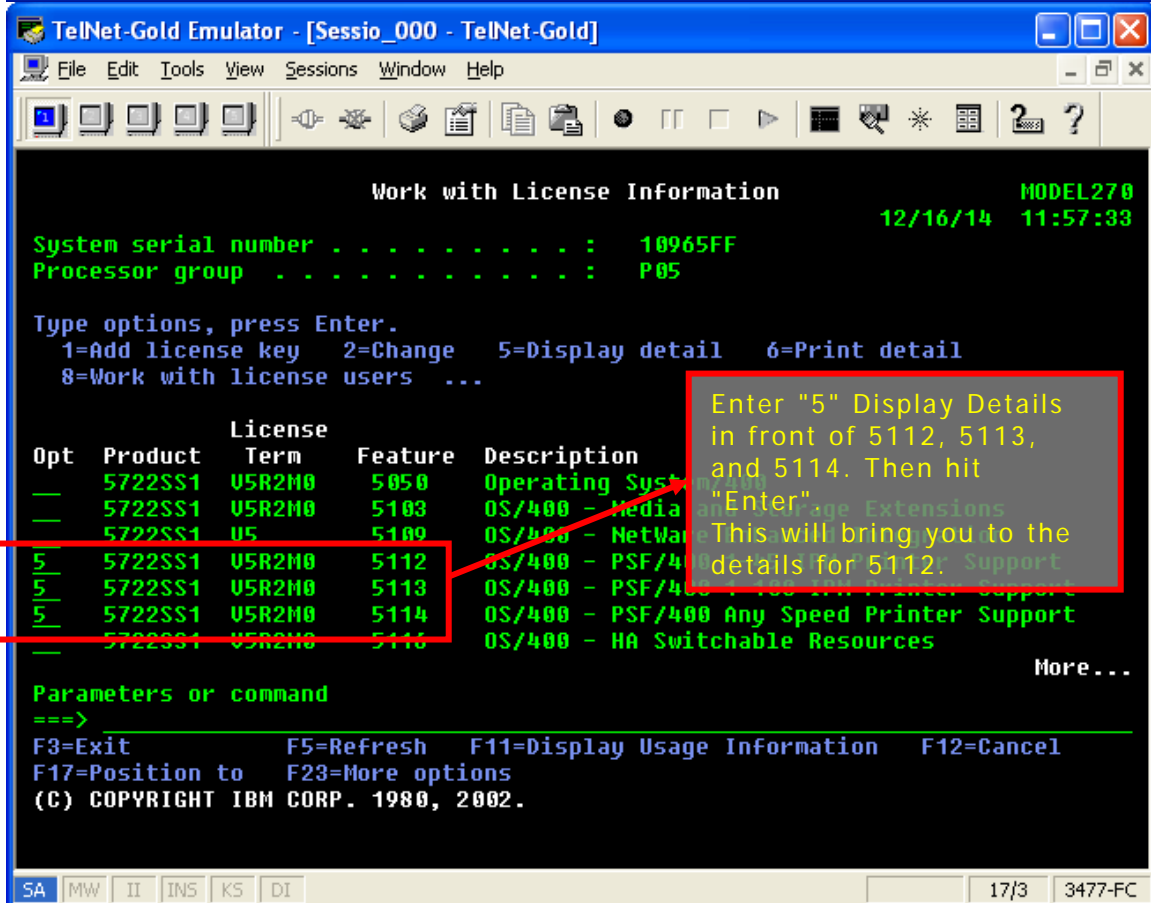
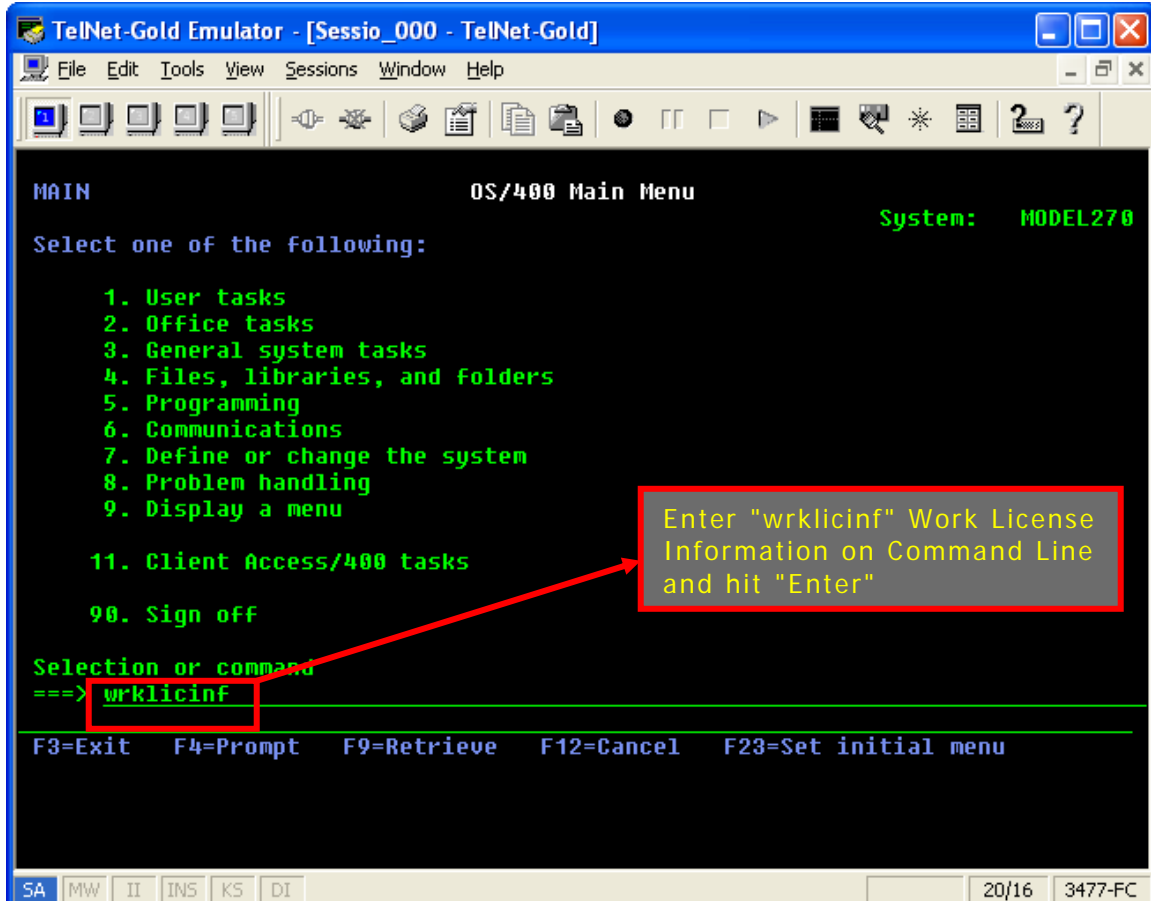
Printers like the IBM 6400 Series, InfoPrint 6500 Series, Printronix P5000/P6000/P7000 Series and some other brands of line printers have an option to change the "emulation" configuration of the device to a non-IPDS model. The **default emulation of IPDS 6400/6500 and Printronix P-Series printers is "4234-12"**, an IPDS Printer. You can **change this to a "4234-2", a Non-IPDS Printer**, through the Printer's Operator Panel .

PSF/400 WILL be required for certain Printers that **CAN NOT be changed to Non-IPDS Printers. Some of the IPDS Printers that CAN NOT be changed to Non-IPDS Printers** are as follows: IBM 4224, 4230, 4247, 6408, 6412, as well as printers from other manufacturers such as Decision Data, Genicom, Memorex, Tally and others.

If you currently have PSF/400 installed, in most cases it will be configured on any new system being brought in. If it is not and it is determined you need it, **PSF/400 has a cost of approximately \$ 2500.00.**

On the following pages you will see a series of **Screen Shots illustrating how to determine if you PSF/400 is currently installed.**

Please call us at (800)597-2525 if you have any questions regarding this.



```

TelNet-Gold Emulator - [Sessio_000 - TelNet-Gold]
File Edit Tools View Sessions Window Help
[Icons]

Display License Information                                MODEL270
                                                         12/16/14 12:00:14
Product ID . . . . . : 5722SS1
License term . . . . . : UCR2M0
Feature . . . . . : 5112
Description . . . . . : PSF/400 - PSF/400 1-45 IPM Printer Support

Compliance type . . . . . : *KEYED
Usage type . . . . . : *CONCURRENT

Usage limit . . . . . : 0
Last update . . . . . : 08/09/08 00:00:00

Threshold . . . . . : 0

Usage count . . . . . : .00

Peak Usage Information:
Peak usage . . . . . : 1.00
Last peak . . . . . : 07/09/10 14:40:45

More ...

F3=Exit F5=Refresh F12=Cancel

SA MW II INS KS DI 1/1 3477-FC
```

```

TelNet-Gold Emulator - [Sessio_000 - TelNet-Gold]
File Edit Tools View Sessions Window Help
[Icons]

Display License Information                                MODEL270
                                                         12/16/14 12:00:47
Product ID . . . . . : 5722SS1
License term . . . . . : UCR2M0
Feature . . . . . : 5113
Description . . . . . : PSF/400 - PSF/400 1-100 IPM Printer Support

Compliance type . . . . . : *KEYED
Usage type . . . . . : *CONCURRENT

Usage limit . . . . . : 0
Last update . . . . . : 08/09/08 00:00:00

Threshold . . . . . : 0

Usage count . . . . . : .00

Peak Usage Information:
Peak usage . . . . . : 1.00
Last peak . . . . . : 07/09/10 14:40:45

More ...

F3=Exit F5=Refresh F12=Cancel

SA MW II INS KS DI 1/1 3477-FC
```

The screenshot shows a TelNet-Gold Emulator window titled "TelNet-Gold Emulator - [Sessio_000 - TelNet-Gold]". The main display area shows "Display License Information" with the following details:

- Product ID : 5722SS1
- License term : UCDPM0
- Feature : 5114
- Description : PSF/400 - PSF/400 Any Speed Printer Support
- Compliance type : *KEYED
- Usage type : *CONCURRENT
- Usage limit : 0
- Last update : 08/09/08 00:00:00
- Threshold : 0
- Usage count : .00
- Peak Usage Information:
 - Peak usage : 1.00
 - Last peak : 07/09/10 14:40:45

Annotations include a red box around the "Feature" value "5114", another red box around the "Usage limit" value "0", and a callout box pointing to these values. The callout box contains the text: "To have PSF/400, you need a Usage Limit of '*NOMAX' in either 5112, 5113, or 5114. You only need this in one. Hit 'F3' to Exit". At the bottom of the window, it says "F3=Exit F5=Refresh F12=Cancel" and "More...". The status bar at the very bottom shows "SA MW II INS KS DI" and "1/1 3477-FC".